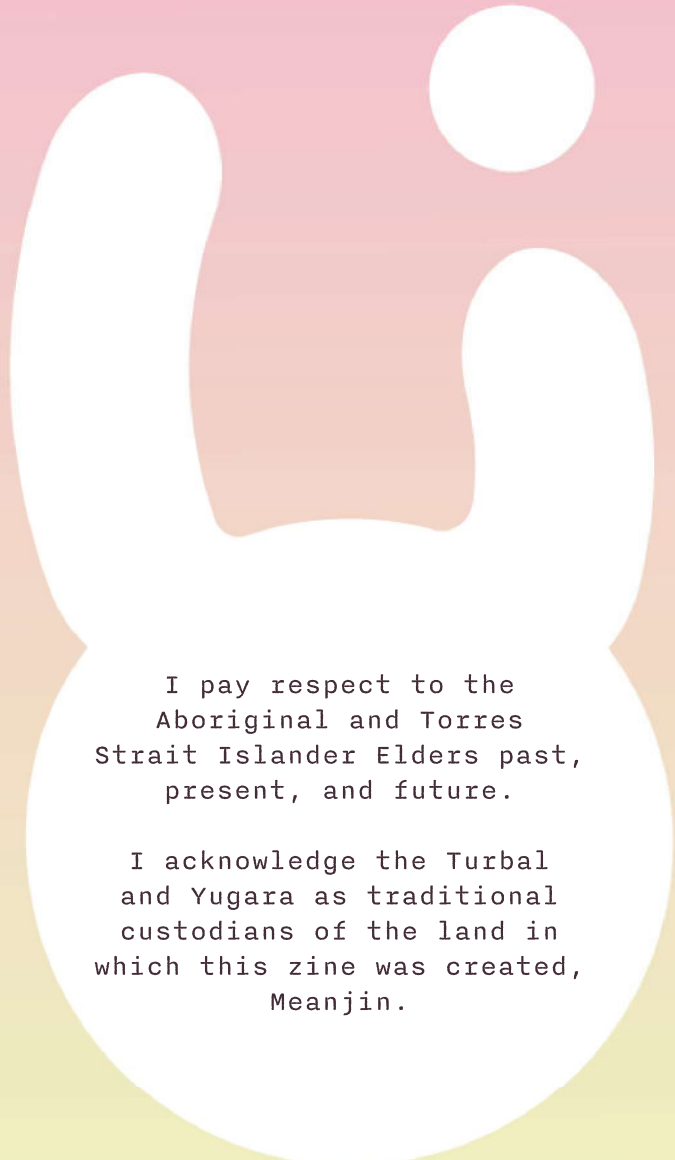




2 0 2 2

2 0 2 3





I pay respect to the
Aboriginal and Torres
Strait Islander Elders past,
present, and future.

I acknowledge the Turbal
and Yugara as traditional
custodians of the land in
which this zine was created,
Meanjin.



Thank you to my tutors,
peers, and dear friends who
have helped me in curating
and developing all the
works displayed here.

Thank you to my dearest
pets, who bring me endless
joy and respite from the
stressors of life.



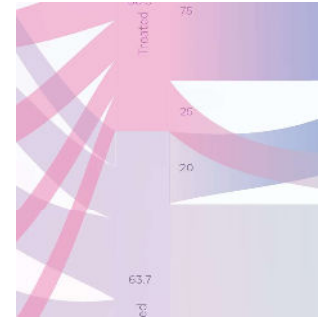
Qing Ming 6



In Another World 8



Thalia 10



Mental Health Inequity 12



Branding Library 14



Qing Ming Festival is an annual tradition to honour the deceased with offerings and prayers. Family members and friends bring the favourite foods of the deceased, light joss sticks, and burn paper ingots and money for the afterlife.

Despite the good intentions, excessive waste and pollution is created due to the mass burning of paper offerings and the use of disposable containers to hold the food.

How can we honour our traditions if we refuse to acknowledge the mess we created and clean up after ourselves? How would the very ancestors we are praying for feel about this unnecessary damage?

workspace
for
projections

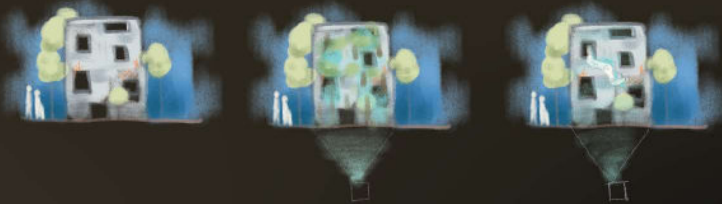


Less than 10% of the built environment reach the end of their life cycle before demolition.

This piece animates the abandon with prospective realities in the realm of the possible, the surreal, and the past.

A scale model of an abandoned building is the canvas for the visual creation. This serves as a prospective project which can be recreated at any scale and has the potential to ignite social change towards how we imagine space and its possibilities.

To destroy without consequence and mind will be the death of humanity; in the physical and meta state.



concept
sketches

in

world

A
N
O
T
H
E
R





Thalia is based on the symbiotic relationship between fungi and algae which known as lichen.

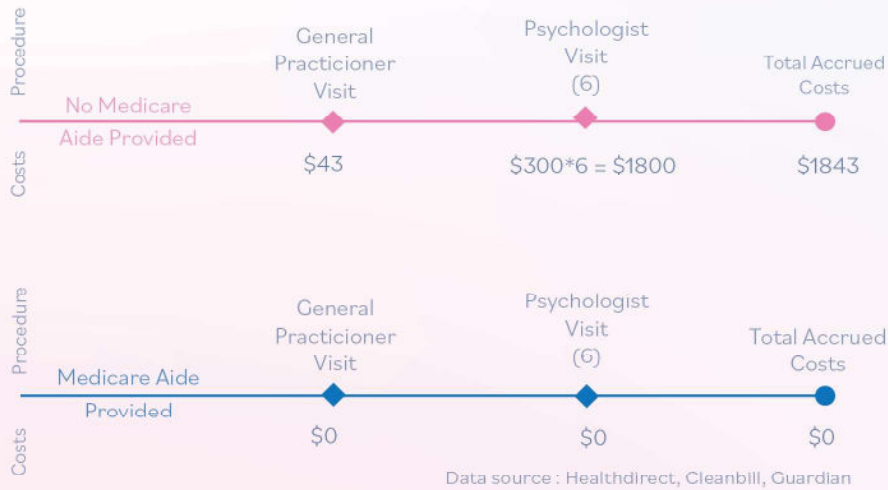
Circles nestled within the form represent the nodules which oxygen is converted into energy while light undulations and swooping lines represent the path of energy exchange.

a b c d e f g h i j
 k l m n o p q r s t
 u v w x y z
 0 1 2 3 4 5 6 7 8 9

* . . . ?

MENTAL HEALTH INEQUITY

Mental Health Treatment Costs
(based on suggested mental health plan)

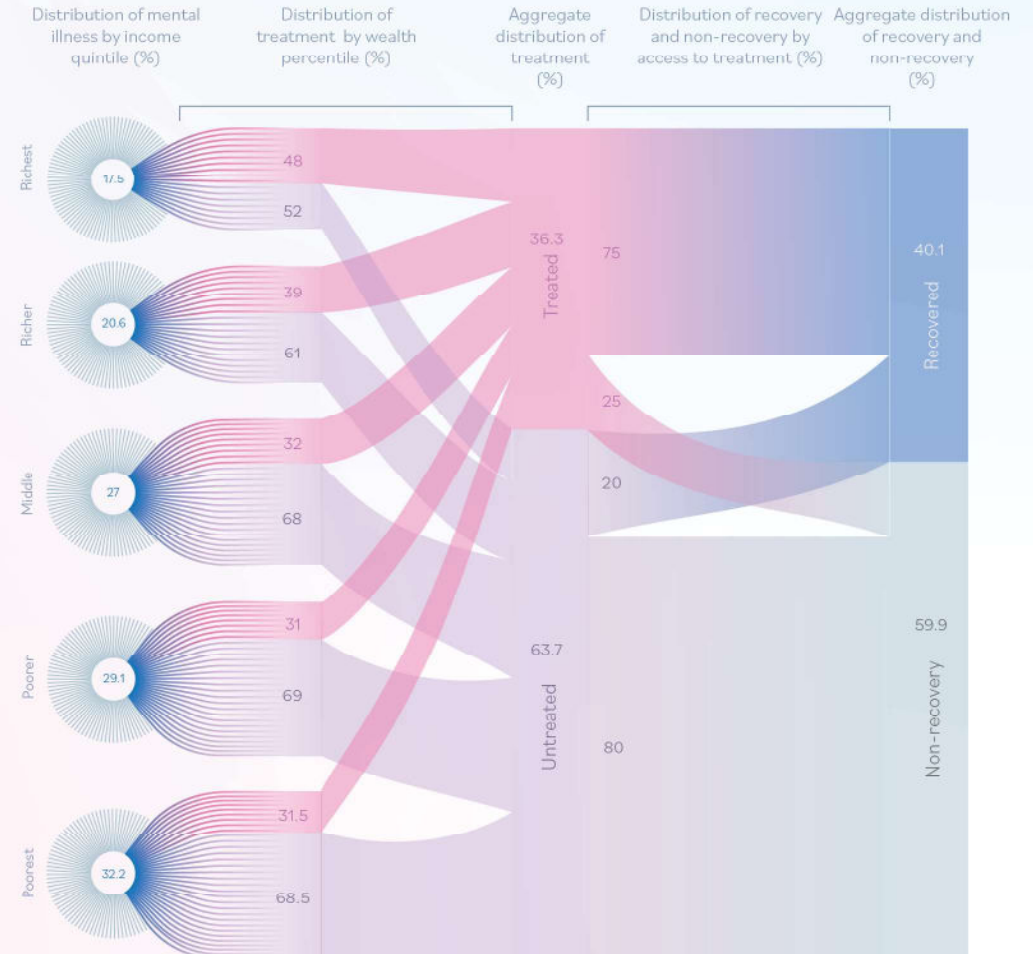


People are struggling now more than ever. With the cost of living crisis we are living through right now, people struggle to feed, clothe, and shelter themselves let alone spend up to \$2000 for their mental health.

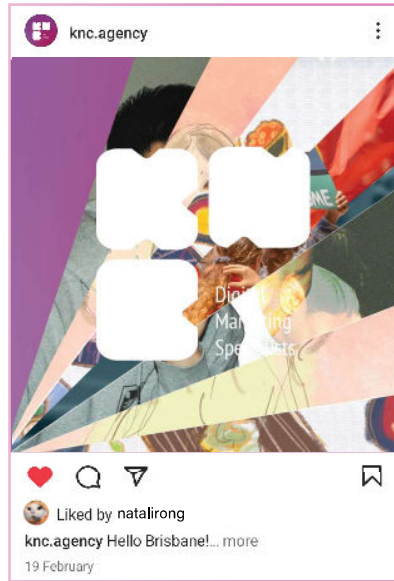
The government has to step in and offer more sustainable rebate programs and subsidies for equitable access to mental health care.

Only 6% of mental health care providers provide bulk billing which mean an overwhelming majority of patients pay the full fee of \$1843 (costs based on suggested prices for providers by healthcare associations) !

Distribution of mental illness and treatment by income percentile with recovery distribution between treated and untreated individuals.



Data source : Hasmi et al. & Australian Psychological Association



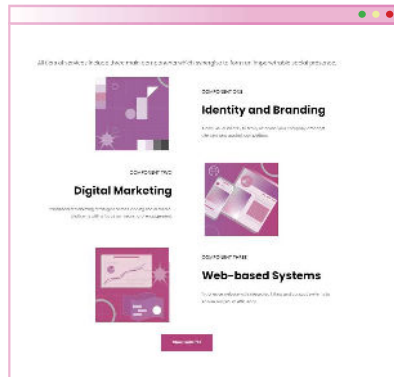
I try to use distinct colour themes to craft a concise brand image which aligns with the service and products provided.



Branding Library

Development of brand identities and asset to establish identity and place within the wide scope of existing brands.

Extensive use of color and texture to define the essence behind the entity.



Banh Mi
Thit 

